



# Lafarge Portland Cement

## LAFARGE

Lafarge Portland Cement is a high quality, cost-effective basic building material used in virtually all forms of construction, from hospitals and homes to schools, tunnels and airports. Lafarge Portland Cement meets or exceeds all applicable chemical and physical requirements of ASTM C 150 and CSA A3000-03 (formerly A5-98).

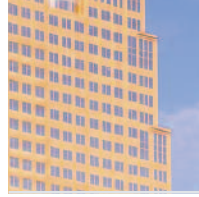
### Product Description

#### Portland Cement

ASTM C 150 Type I, Type IA, Type II, Type III, Type V  
CSA A3000-03 (formerly A5-98), GU (T-10), MH (T-20), MS (T-20), HE (T-30),  
LH (T-40), HS (T-50)

**Basic Use:** Lafarge Portland Cement is a cost-effective basic building material. It can be used in a wide variety of commercial and architectural concrete construction applications. Uses include cast-in-place, pre-cast, tilt-up, water tanks, drains, bridges, roads, pipes, concrete masonry units, pre-stressed concrete members, masonry mortars and grouts.





# LAFARGE PORTLAND CEMENT

## U.S.

- Type I** – This is a general-purpose cement suitable for all uses where the special properties of other types of portland cement are not required.
- Type IA** – This cement contains an additive that will entrain air bubbles to aid in durability when concrete is exposed to freezing temperatures.
- Type II** – For general use, especially when moderate sulfate resistance or moderate heat of hydration is desired.
- Type III** – This cement provides high early strength when compared with Type I.
- Type V** – This is for use when high sulfate resistance is desired. Type V generally gains strength more slowly than Type I.

## Canada

- GU (formerly T-10)** – General use cement, suitable for all applications where the special properties of any other type of portland cement is not required.
- MS (formerly T-20)** – Moderate sulphate resistant cement for use in applications requiring moderate levels of sulphate resistance.
- MH (formerly T-20)** – Moderate heat cement for use in applications requiring moderately low levels of heat generation during the hydration process.
- HE (formerly T-30)** – High early strength cement for use where high early strengths are required.
- LH (formerly T-40)** – Low heat cement for use in applications that require significantly low levels of heat generation during the hydration process.
- HS (formerly T-50)** – High sulphate resistant cement for use in applications that require high levels of sulphate resistance. HS cement generally gains strength more slowly than the other types.

## Options

Select Lafarge North America manufacturing plants produce air-entrained (Type IA) portland cement that contains an additive that will entrain air bubbles to aid in durability when concrete is exposed to freezing temperatures. Certain locations manufacture cements meeting the optional physical and chemical requirements of ASTM and CSA. AASHTO cements are available in certain geographic areas. Contact your Lafarge Cement representative for product use and availability.

## Technical data

Lafarge Portland Cement meets or exceeds all applicable chemical and physical requirements of ASTM C 150 and CSA A3000-03 (formerly A5-98).

## Use and limitations

Lafarge North America manufactures all products in accordance with strict QA/QC (quality assurance and quality control) procedures to ensure optimum product performance and uniformity. However, there are many variables that affect concrete performance that are beyond the control of the cement manufacturer. Good concreting practices in accordance with the American Concrete Institute, The National Building Code, Provincial, Municipal and other local building codes are required to achieve desired results. Skilled persons should use these products with special attention given to formwork, batching, mixing, placing, finishing and curing. In most applications, quality aggregates, admixtures and additives should be utilized. For detailed information, contact your Lafarge North America sales office.

## Product Name

Lafarge Portland Cement

## Manufacturer

Lafarge North America Inc.  
12950 Worldgate Drive, Suite 500  
Herndon, Virginia 20170

Lafarge Canada Inc.  
606 Cathcart Street  
Montréal, Québec H3B 1L7

[www.lafarge-na.com](http://www.lafarge-na.com)

## Precautions

Direct contact with wet cement should be avoided. If contact occurs, the skin should be washed with water as soon as possible. Exposure can cause serious, potentially irreversible tissue destruction in the form of chemical (caustic) burns. If cement gets into the eyes, immediately rinse thoroughly with water and seek medical attention. For more information, reference the applicable Lafarge Material Safety Data Sheet (MSDS). The MSDS should be consulted prior to use of this product and is available upon request and online at [www.lafarge-na.com](http://www.lafarge-na.com).

## Contact your Lafarge Office for specific product information, availability and ordering.

### Lakes and Seaway Business Unit

Bingham Farms, Michigan  
Phone: 248-594-1991

### River Business Unit

Lee's Summit, Missouri  
Phone: 816-251-2100

### U.S. East Business Unit

Alpharetta, Georgia  
Phone: 678-746-2000

### Western Business Unit

Calgary, Alberta  
Phone: 403-271-9110

## Limited Warranty

Lafarge warrants that Lafarge Portland Cement meets all applicable requirements of ASTM C 150 and CSA A3000-03. Lafarge makes no other warranty, whether of merchantability or fitness for a particular purpose, with respect to Lafarge Portland Cement. Having no control over its use, Lafarge will not guarantee finished work in which Lafarge Portland Cement is used.

